

# West Shore Lake Pontchartrain

## Stakeholder Update

July 28, 2021

Bradley Drouant, PE, PMP  
Sr. Project Manager  
New Orleans District  
U.S. Army Corps of Engineers



®

US Army Corps of Engineers  
**BUILDING STRONG**®



# Agenda

- General Status
- Borrow
- Right-of-Entry
- St. James Parish Update

# General Status

- Levee construction reaches have been optimized to maximize construction access (shown on following page)
  - ▶ Currently have 13 levee contracts and 1 pump station contract
  
- Design Optimization Efforts
  - ▶ These efforts include:
    - Reviewing geotechnical parameters that impact the cross section of the levee, CPRA and USACE are close to finalizing this information that will be used going forward
    - Initial pump alternatives have been run in HEC-RAS, and have been sent to Stantec for quality control reviews
    - ADCIRC model runs to confirm levee design heights are expected to be complete mid-July
  
- What isn't being changed in this effort?
  - Level of risk reduction provided from hurricanes remains 100 yr or 1%
  
- Clay Stockpile contract 1 has begun hauling material approximately 10,000 cy have been placed along access road J, Clay stockpile contract 2 continues to stockpile material in the spillway, Sand Stockpile has also hauled 10,000 cy to access road J.
  
- Access Road J Extension to Test Section WSLP-101 - We have awarded the mod to extend this road and work is underway, expected to reach the pipeline corridor end of July.

# General Status (cont.)

- WSLP-101:
  - ▶ We have received an initial proposal from the contractor and are holding a scoping meeting 28 Jul 21 prior to negotiations. This is not expected to delay initiation of work as access road J extension is still required.
  
- Remaining Access Roads:
  - ▶ Advertised 4 June 21, proposals are currently due 6 Aug 21 after an amendment was issued.
  - ▶ Looking to award contract with remaining access roads in early July with Road A, B, C in base contract and S,D,F, & G as options.
  
- Tree/Clearing Pre-Loading contracts
  - ▶ Depending on the outcome of the optimization efforts, if levee re-designs are required we may move forward with additional contracts to prepare the alignment and perform preparatory work to continue to move the project forward
  
- Pile Load Test
  - ▶ Plans are being revised to conduct one of the four pile load tests at the end of access Road J rather than near Prescott to avoid additional LONOs and Entergy transmission line clearance issues
  
- Right of Entry
  - ▶ PLD has appropriated much of the alignment
  - ▶ CPRA still working on final LONO across the utility corridor from Air Liquide



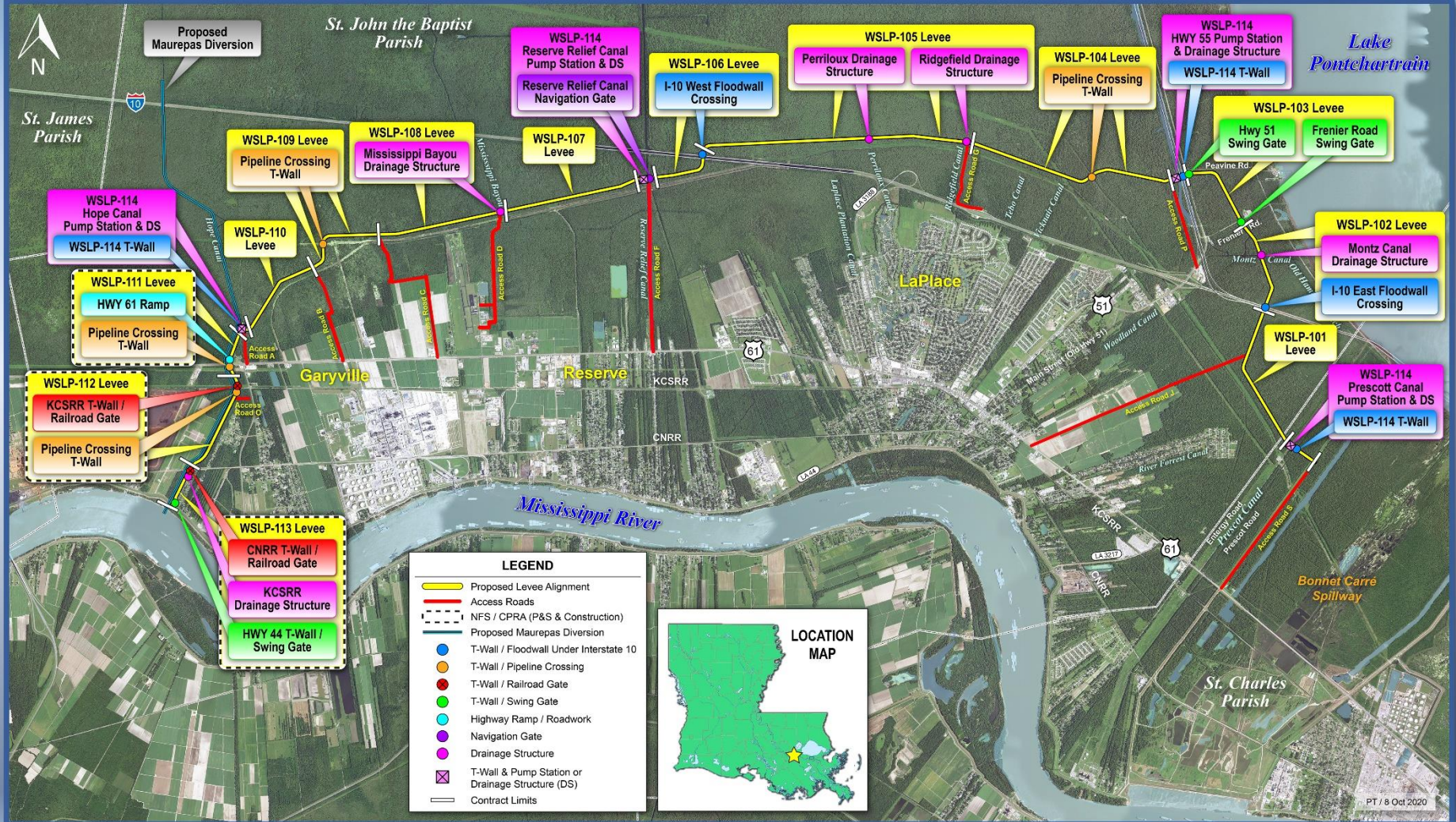
# Levee Borrow Requirements

- Currently estimating a need of about 7.0M – 9.0M cubic yards of levee material for construction
- Bonnet Carre' Spillway (BCS)
  - ▶ BCS currently has 3.5M CY readily available
  - ▶ Access issues due to high stages on Mississippi River
- Will continue to pursue additional Government Furnished borrow
- Contractor Furnished Borrow List used for levee construction in New Orleans not authorized to be used for the WSLP project
- WSLP approved to use commercially available borrow sources
  - ▶ Sources Sought issued to identify commercial borrow sources
  - ▶ Requirements to become a commercial borrow source were included in the Sources Sought solicitation
  - ▶ Sources Sought closed 5 Nov 2020. Comments provided to all applicants
  - ▶ 5 pits have been pre-qualified for inclusion on the list
  - ▶ No additional pits expected to be qualified in the near-term





# West Shore Lake Pontchartrain







# WSLP - St James Parish





# Questions